



# WARLUWAY

## WESTERN AUSTRALIA

THE LAND. THE CULTURE. THE JOURNEY.

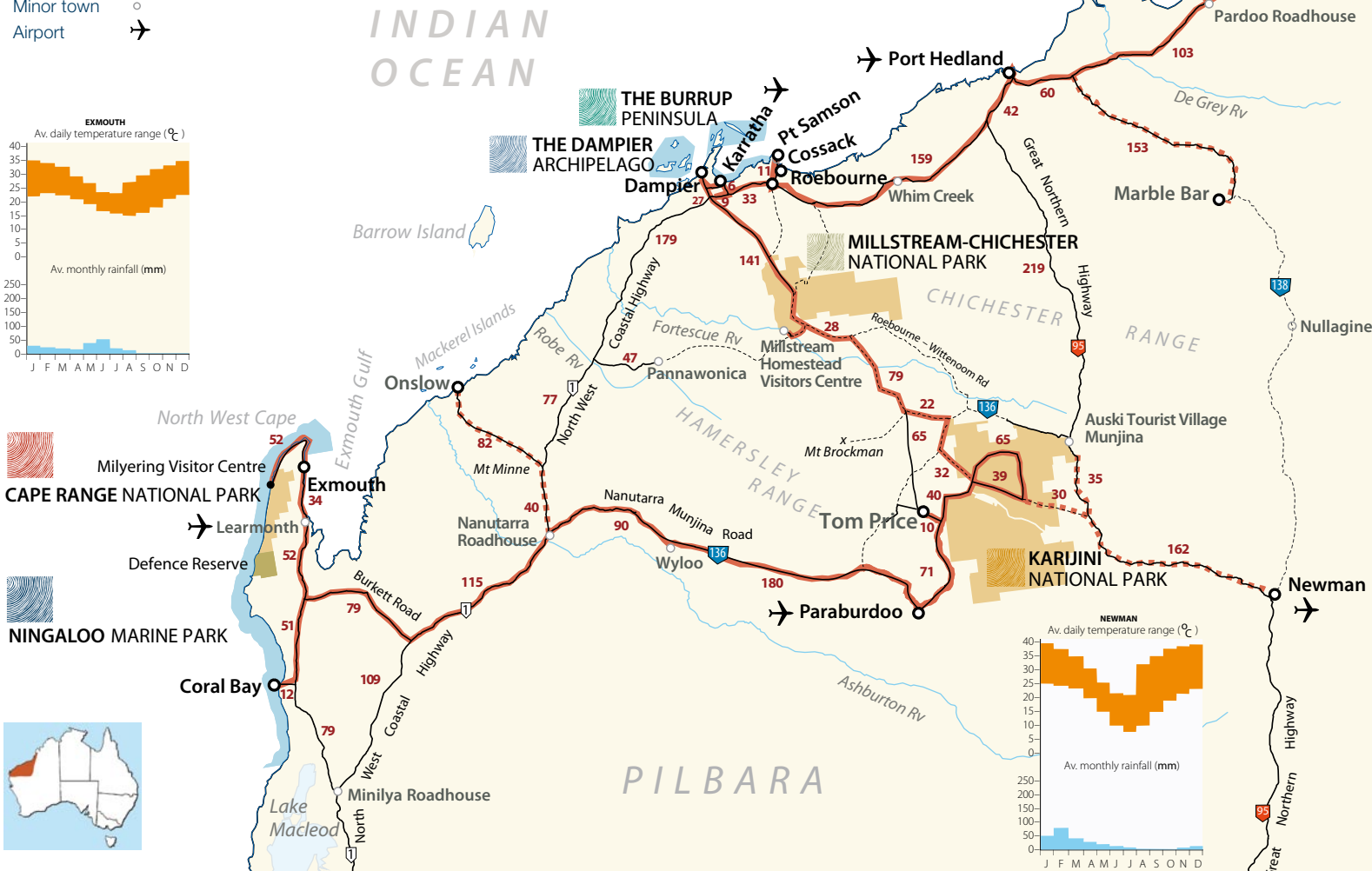
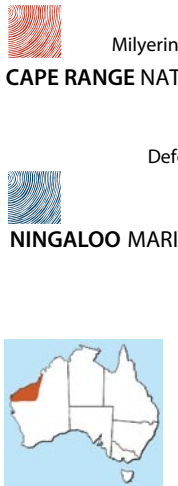
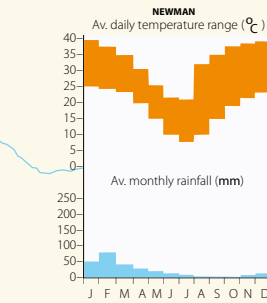
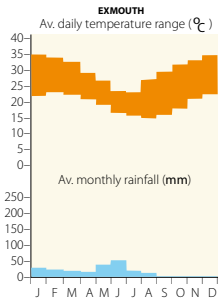
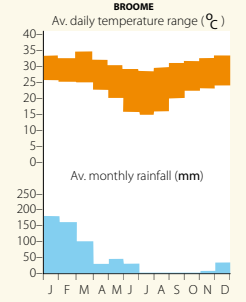
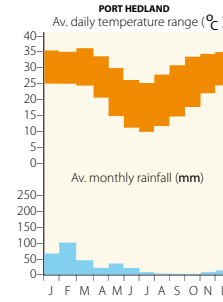
- Warlu Way
- Optional side trip
- Sealed roads
- Unsealed road
- Marine Park
- National Park
- Major Warlu Way town
- Minor town
- Airport

### Approximate Driving Distances—Warlu Way Route

Exmouth to Coral Bay return	310
Exmouth to Milyering return	80
Exmouth to Nanutarra Roadhouse	286
Nanutarra Roadhouse to Paraburdoo	275
Paraburdoo to Tom Price	79
Tom Price to Karijini National Park	97
Karijini National Park to Millstream Chichester National Park	314
Millstream Chichester National Park to Karratha	142
Karratha to Roebourne	40
Roebourne to Port Hedland	202
Port Hedland to Marble Bar Turn Off	50
Marble Bar Turn Off to Eighty Mile Beach	200
Eighty Mile Beach to Broome	380

### Additional Routes

Nanutarra R/H to Onslow return	252
Karijini NP VC to Newman VC return	400
Roebourne VC to Cossack return	32
Marble Bar T/Off to Marble Bar return	304



The approximate distance of the Warlu Way is 2,500 kms however this does depend on the route you take and where you decide to start and finish. Always check distances before embarking on your journey with the local Visitor Centre or Main Roads.



### BUSH SURVIVAL TIPS

- Before you "go bush", remember to;**
- Let someone know your destination, schedule and any changes to these.
  - Carry extra food and water
  - Carry a signal device, such as a flare or mirror
  - Make sure you know how to use 4WD
  - Plan your route and take maps
  - If possible, carry some type of communication equipment
- If you become stuck;**
- Always stay with your vehicle
  - Conserve your food and water
  - Park so you can be seen